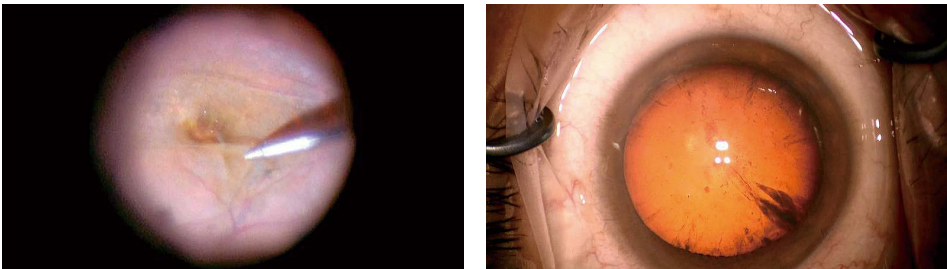


Optics and Light Source

- New Optics**
- New red reflex illumination system providing extremely bright reflected light from the fundus, allowing Surgeons to perform cataract surgery with ease.
 - By adopting a standard objective lens of F=200 mm, the working distance is optimized for vitreoretinal surgery.
 - 10x magnification eyepieces bring a wider, brighter, and sharper view with a larger depth of focus.*

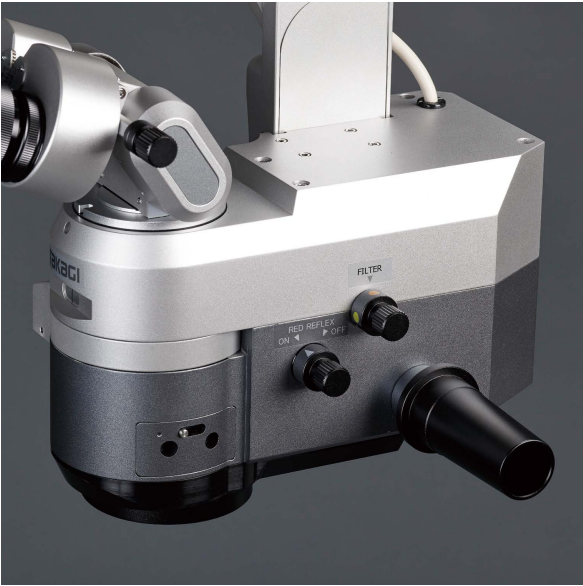
* Compared to OM-18



- Two Independent LED Light Sources**
- Light intensity for red-reflex illumination & coaxial illumination can be adjusted separately due to their fully independent light sources.

- High-luminance LED**
- Bright and sharp high-luminance LED having excellent color balance, giving a much brighter reflected light from the fundus in combination with the new red reflex illumination optical system.

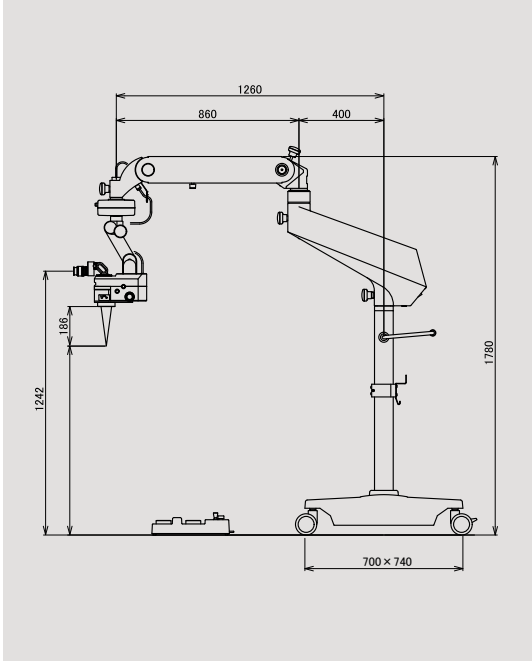
- Blue Light Reduction**
- With the blue correction filter, the projected light is soft and easy on the patient's eye by reducing the peak of the characteristic blue wavelength of LED.



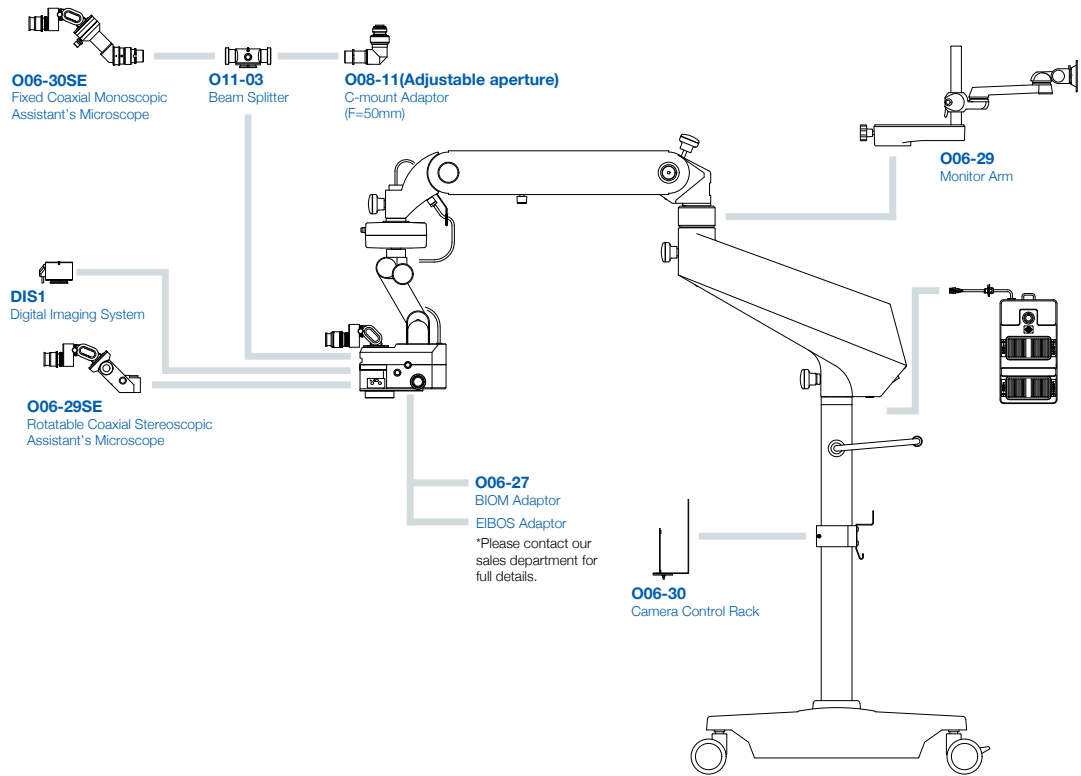
Specifications

Microscope	Magnification changer	Motorized zoom type (zoom ratio 1:6)
	Objective	F=200mm
	Eyepieces	10x (high-eyepoint & wide field)
	Binoculars	Tilttable binocular tubes F=170mm
	Total magnifications	3.4x to 20.4x
	Real fields of view	Ø58.8mm to Ø9.8mm
Illumination	Focusing stroke	50mm (with centering function)
	X-Y movement stroke	±25mm in each direction (with centering function)
	System	Direct illumination
	Light source	LED
	Field of illumination	Ø60mm
	Field of red reflex illumination	Ø20mm
Arm & base	Illumination control	9 steps
	Filters	Heat-absorbing, Blue Correction, Yellow, Retina Shield
	Mount	Floor stand
	Maximum arm extension	1260mm
	Arm vertical stroke	500mm
	Base size	700mm x 740mm
Others	Weight	163kg
	Power consumption	125VA
Power supply		AC 100-230V, 50/60Hz

Dimensions



System Chart



• Design and specifications are subject to change as improvements are made to the product.



For The Americas, Asia-Pacific & Middle East
TAKAGI SEIKO CO., LTD.
330-2 Iwaifune, Nakano-shi, Nagano-ken, 383-8585, Japan
TEL : +81(0)269-22-4511(Switchboard) URL : <https://www.takagi-j.com>

For Europe & Africa
Takagi Ophthalmic Instruments Europe Ltd
Citylabs 1.0, Nelson Street, Manchester, M13 9NQ, UK
TEL : +44 (0)161 273 6330 URL : <https://www.takagieurope.com>



<https://www.takagi-global.com>



B17004 Rev.1 Printed in Japan 2020.7 KY



Operating Microscope OM-19

Serving Your Vision





Operating Microscope

OM-19

Operating microscope with a feeling of being “visible”



The world's first operating microscope with independent light intensity adjustment for coaxial and red-reflex illumination to suit each patient case and Surgeons unique preference.*

High-performance LED operating microscope combining “visualizing” with “ease of use”.

*An in-company investigation.

Ergonomics Tailored for You

Tilttable Binocular Tubes

- Tilttable binocular tubes with an incline of more than 90° to suit the height and posture of the operating surgeon. Movable range: 0° (straight) to 90° (inclined).
- High-grade high-eyepoint multi-coated eyepieces delivering a bright and sharp view.



Easy-to-see Operation Panel

- Light intensity for coaxial and red-reflex illumination can be adjusted separately.
- Focus, zoom, and X-Y speed are independently adjustable.
- Automatic X-Y and focus centering can be performed at the touch of a button.



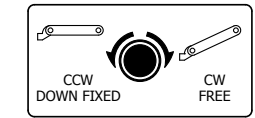
Foot Controller

- 10-way operation including red reflex illumination on/off, coaxial illumination on/off, X-Y movement, focusing up/down, and zoom in/out are all included.
- Foot switch configuration of the focusing up/down and zoom in/out can be changed according to the Surgeons individual requirements and application.
- Waterproof foot controller.



Safety Stop Mechanism

- Safety stop mechanism equipped as standard, where the lowest arm position can be set according to the height of the operating table, critical during VR procedures.



Microscope Head Tilting Mechanism

- By adopting a fine movement interlock system, the microscope head tilts back and forth easily, necessary in the application of glaucoma surgery, with a movable range of around 30° each way.

Various Options

Rotating Coaxial Stereoscopic Assistant's Microscope

- Stereoscopic view available also through the assistant's microscope.*
- 180° continuous rotation through right and left directions whilst mounted.
- Magnification adjusted manually in three steps.
- Tilttable binocular tubes equipped as standard, which can incline more than 90°.

*Red reflex image through the assistant's microscope is different than the main surgeons view, the red reflex illumination is optimized for the main surgeon's optics.

Eyeieces	10x
Objective	F=200mm
Total magnifications	3.3x, 5.4x, 8.7x
Real fields of view	Ø60mm, Ø37mm, Ø23mm



Fixed Coaxial Monoscopic Assistant's Microscope

- Providing the same coaxial image and red reflex illumination as the main surgeon's microscope. O11-03 Beam Splitter is required in order to install O06-30SE Fixed Coaxial Assistant's Microscope.



C-mount Adapter

- CCD camera system can be mounted using O11-03 Beam Splitter and O08-11 C-mount Camera Adaptor for integration with surgical video documentation systems.
- O08-11 C-mount Camera Adapter is equipped with an adjustable aperture for regulating light.



Monitor Arm & Camera Control Rack

- LCD monitor can be mounted on the upper microscope arm with O06-29 Monitor Arm.
- Camera control unit can be mounted on the lower microscope pole with O06-30 Camera Control Rack.

Fundus Observation Devices Adaptations

- Oculus BIOM and Haag Streit EIBOS adaptations are available.

*For compatibility details, please contact your local distributor or our Sales Department.

